



TUESDAY 7 FEBRUARY 2012

AT THE CLUB

STORM DAMAGE TWO YEARS ON

A member recently had a new antenna installed on the top of the flybridge. When the contractor climbed up to inspect the area prior to quoting, he drew the member's attention to severe pitting of the fibreglass caused by hail, apparently in March 2010.

At that time, the member had sustained other hail damage which was repaired under his insurance policy. As there was no hail damage to the decks of the vessel, he assumed that the thickness and strength of the material up there would be the same as the decks. Definitely not so.

Fortunately, his insurance company accepted the substantial claim almost two years after the damage had occurred. He has asked us to pass on this information so that other members may be aware of possible damage on their vessels that they had not considered when making their initial claims two years ago.

LIVE ENTERTAINMENT ON THE QUARTERDECK THIS WEDNESDAY EVENING

With the warmer weather now well and truly set in, what better way to spend your balmy Wednesday evening than with a leisurely Twilight Sail followed by some live entertainment.

Join us each Wednesday evening over the next three weeks for some great camaraderie, good food and live music.

Come and enjoy a performance by UK born Gary Michael. Gary has been a professional entertainer for the past three decades. Now in Australia, the solo guitar vocalist provides musical entertainment in many genres. He has an extensive playlist which you are sure to enjoy.

Gary will be performing from 7:00pm – 10:00pm.

This is a very popular evening and bookings are strongly recommended. Please phone Margaret on 9364 5844 or email clubbookings@sopyc.com.au



You can save 60 litres of water a day
at home, at work and in the community.
To find out how, visit [Target 60](#)



THIS WEEK AT A GLANCE

Wednesday



8 **Linfox Mid Week Invitation Race 1440 hrs**
Ferguson Corporation Twilight Invitation Sail 1800
A la Carte Dining from 1700 hrs.
Gary Michael performing on the Quarterdeck from 1900 – 2200 hrs

Thursday

Chase the Ace and Flavoursome Thursdays will recommence on Thursday 1 March. A sausage sizzle will be available during the break. All are welcome.

9 **Cruising Section Meeting 1930 hrs**
Sausage Sizzle from 1730 hrs
A la Carte Dining from 1700 hrs

Friday

10 **A la Carte Dining Lunch and Dinner**

Saturday

11 **A la Carte Dining Lunch and Dinner**
Algal Bloom Inshore Race
Keelboats Club Non-Consistency Race 1325 hrs

| | | |
|----------------|----|---|
| Sunday | 12 | A la Carte Dining Lunch and Dinner Centreboard Sailing 1325 hrs |
| Monday | 13 | Membership Committee Meeting 1800 hrs Training & Development Committee Meeting 1800 hrs SS27 Committee Meeting 1930 hrs |
| Tuesday | 14 | Ladies Luncheon 1200 hrs Works Committee Meeting 1730 hrs Division One Committee Meeting 1800 hrs Centreboard Committee Meeting 1830 hrs |



Bupa is proud to announce that as a member of SOPYC you are able to access our range of exclusive corporate suite of health insurance products.

Ring James Young today on 0400 405 105 for an obligation free quote/comparison or email james.young@bupa.com.au

ON THE TABLE

(Please note that menus are subject to change at short notice)

Wednesday to Saturday

Bar Menu – available from 1200hrs to 2100 hrs

A la Carte Menu – available for dinner from 1700 hrs

The Quarterdeck a la carte menu also specials that change daily.

Thursday

A la Carte Dining from 1700 hrs

Friday

A la Carte Dinner and Bar Menu Available

Saturday

A la Carte Dinner and Bar Menu Available

Sunday

A la Carte Dinner Menu Available from 1700hrs

COMING EVENTS

Email Bookings: clubbookings@sopyc.com.au

CLICK ON THE IMAGES TO VIEW LARGER VERSIONS



TUESDAY 14 FEBRUARY 2012

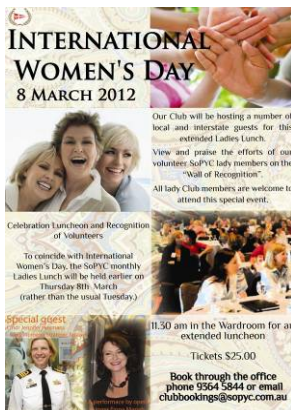
LADIES LUNCHEON

The next Ladies Luncheon will be on Valentine's Day and we will be celebrating by having a Intimo Lingerie party. – Come and be inspired.

The lunch will include a raffle will great prizes and of course a lovely two course lunch – all for \$25.00.

If you are a new member to the club and don't have anyone to come with. You are more than welcome to sit at the 'Committee Table'. Just ask to be seated at the committee table when making your booking.

Bookings are essential and can be made through the office by phoning 9364 5844 or email clubbookings@sopyc.com.au



THURSDAY 8 MARCH 2012

LADIES LUNCHEON – INTERNATIONAL WOMEN'S DAY

To coincide with International Women's Day, the SoPYC monthly Ladies Lunch will be held earlier on Thursday 8th March (rather than the usual Tuesday.)

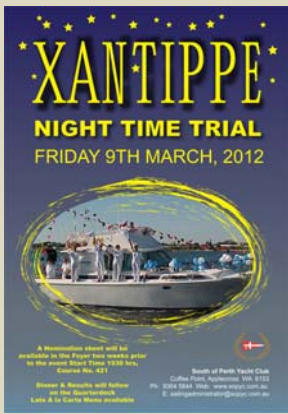
Celebration Luncheon and Recognition of Volunteers

With Special guest Commodore Jennifer Heymans - Navy Women's Strategic Adviser and a performance by opera singer Fiona Mariah.

Enjoy a wonderful two course meal from 11:30am for an extended luncheon at only \$25.00 per person.

All lady members and their friends welcome.

Bookings are essential please contact the office on 9364 5844 or email clubbookings@sopyc.com.au to reserve your table.



FRIDAY 9 MARCH
XANTIPPE NIGHT TIME TRIAL

Calling all Time Triallers....

You are invited to our Xantippe Night Time Trial on Friday 9 March starting at 7:30pm.

A Nomination sheet will be available in the Foyer two weeks prior to the event.

Dinner and results will follow on the Quarterdeck with a late A la Carte Menu available.

So come along, bring your family and friends and enjoy this unique time trialling experience.



WEDNESDAY 14 MARCH & FRIDAY 23 MARCH

EU-NA-MARA and YIMBALA EVENTS

Now's the time to get your team together.

Both events are a long standing tradition in the Club and are a great opportunity for the Power Boaties and the Yachties to socialize and share some of their competitive spirit as well as gain an appreciation for each other's sport.

The EU-NA-MARA will be held on the Wednesday evening Ferguson Corporation Twilight on 14 March

(Power boat skippers helm yachts in a sailing event)
 Presentation of Results to follow on the Quarterdeck.
 A la Carte Menu Available

The YIMBALA will be held on Friday Evening 23 March

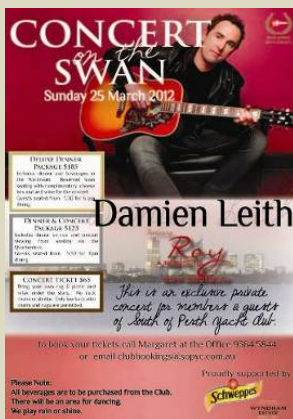
(Yacht Skippers drive a power boat in an evening time trial)
 Presentation of Results to follow on the Quarterdeck.
 A la Carte Menu Available

Nomination available in the Main Foyer two weeks prior to each event.

Yachties looking for Power team members , contact Troy Dalglish on 0448 288 044

Poweries looking for Sailing team members, contact Laurence Hansen on 0413 298 370

Be in the running for the "Norm Cocks" Trophy for the combined overall winner



SUNDAY 25 MARCH 2012

CONCERT ON THE SWAN - DAMIEN LEITH

Proudly Sponsored by Schweppes and Wyndham Estate

Damien Leith will take the stage to honour the talents of Roy Orbison - a 'songwriter extraordinaire' who changed the structure of songwriting forever. Damien will bring to life songs that Orbison made household names including 'Only The Lonely', 'Crying', 'Oh Pretty Woman', 'She's A Mystery to Me' and 'I Drove All Night'.

Not only will Damien sing these classic songs with the passion and emotion that audiences have come to expect from the popular Irishman, but he will also take you on a journey, sharing stories of his experiences in the creation of his wonderful album and the honour of celebrating Roy Orbison during the 75th anniversary year of one of rock n roll's greatest contributors.

This show is not a Roy Orbison Concert. It is a salute to an amazing talent from one of his greatest admirers. Come join the celebrations! Mercy!

This is an exclusive private concert for members and guests of South of Perth Yacht Club.

Deluxe Dinner Package \$185 - Includes dinner and beverages in the Wardroom with a cheese box and bottle of wine per couple and reserved seating in front of the stage for the concert.

Dinner & Concert Package \$125 -Includes dinner in the Quarterdeck and viewing concert from seating on the Quarterdeck.

Concert Ticket \$65 -Bring your own rug and picnic or enjoy the delicious F&B Snack Bar which will be available and relax under the stars. No deck chairs or similar. Only low back mini chairs and rugs are permitted.

Bookings can be made by phoning Margaret at the office - 9364 5844 or email clubbookings@sopyc.com.au



FRIDAY 13 APRIL 2012

POWER YACHT PRE-SEASON COCKTAIL PARTY

The Power Yacht Section invites all members to pull out their finery to attend the Pre-Season Cocktail Party.

Welcome new members, catch up with old friends and have a great night.

Enjoy a complimentary cocktail in the Wardroom at 7:00pm and sumptuous cocktail food served throughout the evening.

Tickets are just \$25.00 per person.

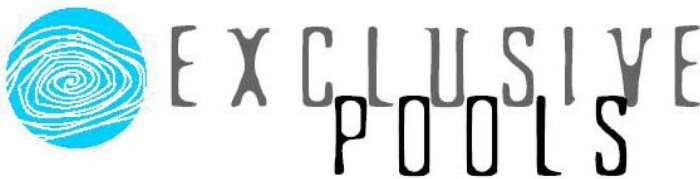
To make your reservation please RSVP by 10 April 2012 by phoning the Office on 9364 5844 or email clubbookings@sopyc.com.au

Don't be disappointed because you forgot to book! Make a Booking today on 9364 5844 or email clubbookings@sopyc.com.au

Please give 48 hours notice if you are unable to attend a booked function.

A neat casual standard of dress is required at all functions unless otherwise stipulated

GRAND SPONSOR OF THE WEEK



EXCLUSIVE POOLS

Mark & Carol Harper

Unit 5
15 Halley Road
BALCATTWA WA 6914

Phone: (08) 9344 2366


Email: carol@exclusivepools.com.au

Website: <http://www.exclusivepools.com.au/>

OTHER ITEMS OF INTEREST

Youth Explorer Voyage (PLYEV)
Curriculum Council Endorsed Program

Leeuwin February Voyage




Places still available! **SCHOLARSHIPS AVAILABLE!**

Voyage 12/03: 16 Feb - 22 Feb, Fremantle to Fremantle

The Leeuwin Ocean Adventure Foundation offers one of the last true ocean adventures - sailing on board Australia's largest tall ship *Leeuwin II*. Our Youth Explorer Voyages allow youth aged 14 and up to develop the skills required to be an active member of a team and a micro-community. On board, participants experience the vastness of the natural environment, sail through the night, and have the opportunity to climb to the top of the tallest mast.

Providing participants with responsible risk taking and a real-life hands-on adventure, these Youth Explorer Voyages encourages all participants to build individual self-esteem, social confidence and self-reliance. This rewarding voyage helps youth identify and set personal goals and develop valuable skills which are transferable to their home, school, and work lives.

Participation in our Youth Explorer Voyages and completion of a portfolio of work is equivalent to 1 unit or a semesters worth of study (5 WACE points) for students in year 10, 11 and 12 of High School.

Leeuwin Ocean Adventure Foundation 

DOLPHIN WATCH TRAINING EVENT – 15 FEBRUARY 2012

2012 promises to be an exciting year for the River Guardians program with many opportunities to learn about and help the Swan Canning Riverpark.

This year along with other great opportunities, we are recruiting more volunteers to help monitor dolphins in the Swan Canning Riverpark for the Dolphin Watch project. Hear from leading research scientists and learn about the resident community of dolphins living in the Riverpark and how to monitor them.

If you're interested in volunteering and becoming an official Dolphin Watch volunteer (Dolphin Watcher), please read the following criteria to see if it applies to you:

1. You must love dolphins,
2. You spend time on or near the Swan Canning Riverpark,
3. You love knowing that what you do is contributing to scientific research, and
4. You love being rewarded for your efforts.

If this sounds like you and you are able to attend the next Dolphin Watch training session on Wednesday 15 February 2012, 6:00pm – 8:30pm at Royal Perth Yacht Club in Crawley, then please register quickly as places fill fast!

Please note that only attendees who have previously registered for this event will be permitted entry on the night due to strict planning requirements. This training event is not recommended for children under the age of 15 years.

To register please email us at guardians@swanrivertrust.wa.gov.au being sure to include information as outlined below. A confirmation email will be sent to you confirming your registration.

REGISTRATION INFORMATION:

- Full name
- Total number of attendees
- Attendees names
- Preferred email address
- Preferred contact number
- Dietary requirements (if applicable)

For more information on the Dolphin Watch project visit our website; www.riverguardians.com.

CONCERT
on the
SWAN
Sunday 25 March 2012

DELUXE DINNER PACKAGE \$185
Includes dinner and beverages in the Wardroom. Reserved lawn seating with complimentary cheese box and wine for the concert. Guests seated from 5.30 for 6pm dining.

DINNER & CONCERT PACKAGE \$125
Includes dinner service and concert viewing from seating on the Quarterdeck. Guests seated from 5.30 for 6pm dining.

CONCERT TICKET \$65
Bring your own rug & picnic and relax under the stars. No deck chairs or similar. Only low back mini chairs and rugs are permitted.

Damien Leith
Featuring
Roy
A TRIBUTE TO
ROY ORBISON

This is an exclusive private concert for members & guests of South of Perth Yacht Club.

to book your tickets call Margaret at the Office 9364 5844
or email clubbookings@sopyc.com.au

Proudly supported by

Schweppes
WYNDHAM ESTATE